

## **Woodpecker Class Information**

Our project focus for Term 5 and 6 is 'Create - Portrait'.

**Website** - <https://www.plumpton.e-sussex.sch.uk/web>

PE – PE will be taught on a Monday. Please can children wear their PE kit to school on Mondays. They children will also take part in a daily mile so please ensure they are comfortable to run in the shoes that they wear to school.

Thank you all for continuing to support your child at home by:

- A) Reading regularly with your child and recording in reading record books (to become a Reading Star);
- B) Completing any set home-learning tasks.
- C) Regularly practising times tables, for example by logging onto TT Rockstars or playing recall games.

## **Key Dates -**

April 19<sup>th</sup>: First day of Term 5

April 21<sup>st</sup>: Year 3 trip to Plumpton Racecourse

April 29<sup>th</sup>: Forest School begin for Year 2 (see separate letter)

### **May**

Monday 2<sup>nd</sup>: Bank Holiday – school closed

Monday 16<sup>th</sup>: Year 2 SATs begin

Friday 27<sup>th</sup>: Last day of Term 5

### **June**

Monday 6<sup>th</sup>: First day of Term 6

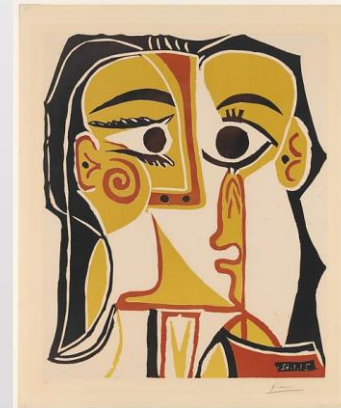
Friday 24<sup>th</sup>: Sports Day

### **July**

Wednesday 20<sup>th</sup>: Last day of school for pupils

# **Welcome to Woodpeckers Class Curriculum Information**

## **Terms 5 & 6**



### **Teachers:**

Mrs Williams & Miss Newnham

### **Teaching Assistant:**

Miss Dewar

### ENGLISH

We will begin our English lessons this term with a focus on non-fiction texts. We will link our writing to our science study, by learning how to construct an information text about plants. We will be looking at how to use language to have a positive or negative impact on the reader.

### ART

We will be focusing on portrait art over the next two terms, exploring a variety of art techniques and materials. Andy Warhol and Picasso are the artists that we will be exploring in detail. As well as developing our own artistic skills, we will also be learning how to analyse pieces of artwork. During Term 5, in the lead up to the Queen's Jubilee, we will be particularly exploring portraits of the Queen, creating our own portraits in a variety of styles. We will then be exploring the question 'Who am I?' in relation to self-portraits.

### SCIENCE

This term we shall be learning about plants. We will be identifying and describing the functions of different parts of flowering plants.

The children will be planning and completing an investigation to see if all roots are the same. We shall be exploring the part that flowers play in the life cycle of a flowering plant.



### FRENCH

In French, we will be continuing to learn how to count, say the days of the week and months of the year. We shall also be learning the names of common animals and foods.

### MATHS

Our main focus at the beginning of Term 5 will be measure, including: Time, Capacity, Mass, Length and Temperature, with a focus on being able to read a variety of scales. We will then return to the four operations – Addition, Subtraction, Multiplication and Division to ensure we consolidate our understanding in these areas, especially when applying in problem solving.



### MUSIC

Music will be central to our Create Project in term 5 and 6. We will be listening to different musical pieces and analysing them from a musical and personal point of view. We will be learning to understand and use a variety of musical terms and definitions. As well as learning songs and having the opportunity to perform them, we will also explore creating and composing our own musical pieces.



### Our Learning Project is: **'Portrait'**



### PE

This term PE will be on a Monday. Our focus is Cricket. We will be honing our batting, bowling and fielding skills as well as playing the game in teams.

### RE

The topic this term is 'The Kingdom of God' and we will be learning about the Apostles and what Pentecost is.

### COMPUTING

In our computing sessions we will be exploring how to create pictures using technology and this will link to some of the portraits we create.

We will also be learning how to present information in different ways using MS PowerPoint.

### PSHE

The theme is Relationships. We will explore families, friendships and kindness.